

LINDOW MAN, THE MUMMY

WHO WAS HE?

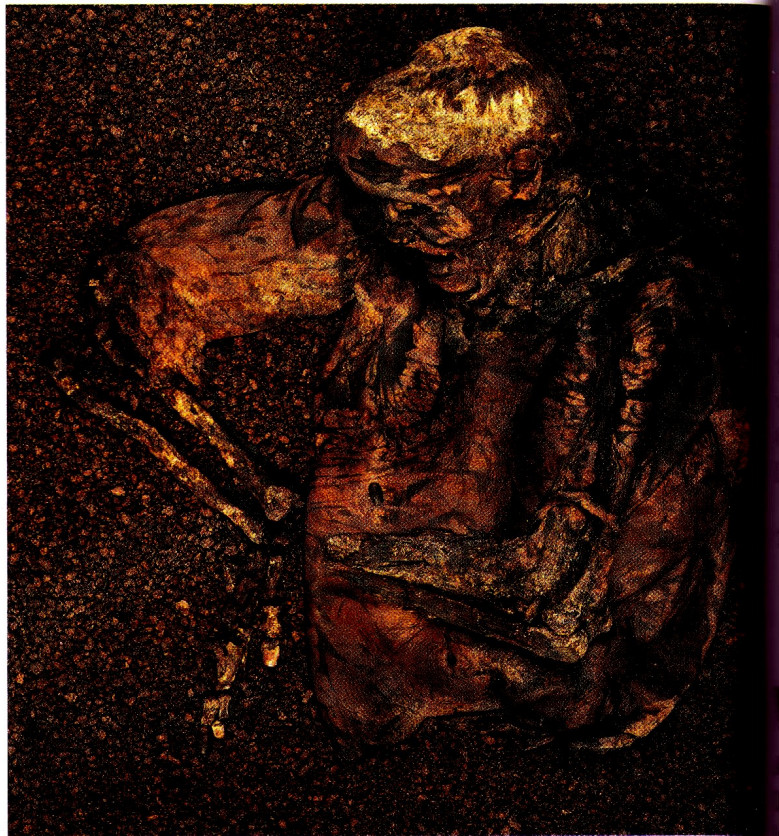
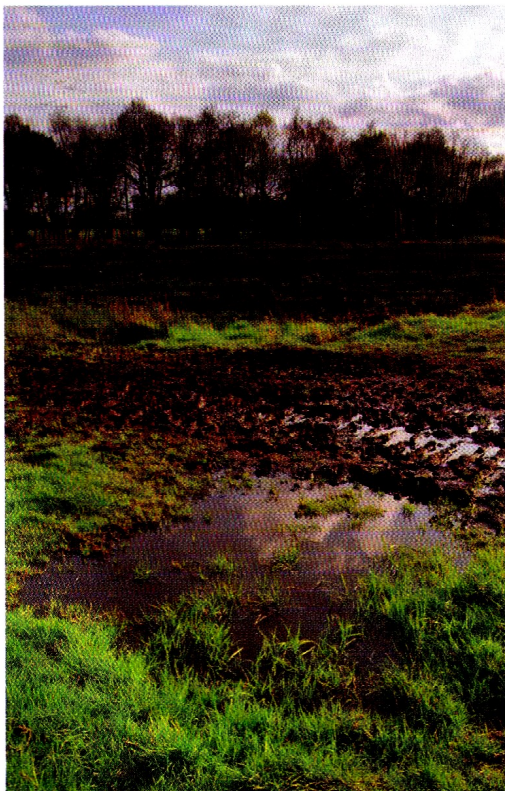
Lindow Man was a Celt and lived about 2000 years ago in central England. He died between 50AD and 100AD. His mummified body was discovered in 1984 in Lindow Moss, near Chester.

Although he has no legs, he is the best preserved of the 200 bodies from that period found in England.

So the scientific community was very excited and studied the body in great detail. He is now on show in the British Museum in London.

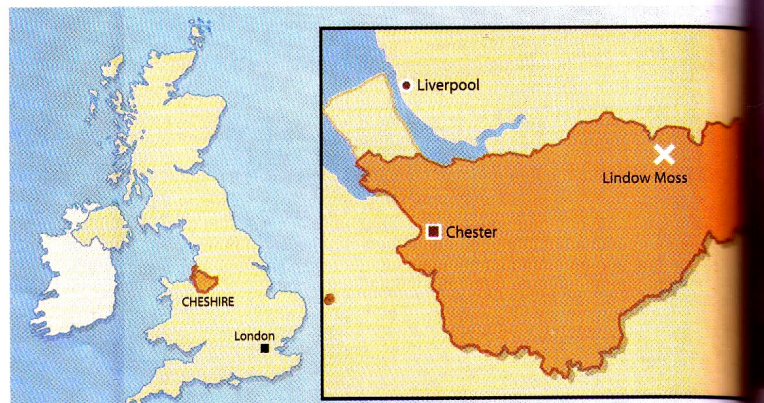
*Lindow Man,
also called Pete Marsh*

Lindow Moss



WHY IS HE ALSO CALLED *PETE MARSH*?

He was nicknamed Pete Marsh because he was found in a marsh (marsh), buried in peat (tourbe), which conserves bodies very well.



Lindow Moss is a marsh in Cheshire, north west of London. It is where Lindow Man was found.

THAT SPEAKS



HOW DID HE DIE?

The study of the mummy revealed that he was first hit on the head, probably with an axe¹, and died instantly. Then he was strangled and finally his throat was cut². The scientists examined the content of his stomach and found that before he died he had eaten cereal grains. They also discovered traces of mistletoe, which was sacred to the druids. So specialists think he was the victim of a druid sacrifice. Can you see the rope that strangled him?

1. 
2. 



◀ mistletoe



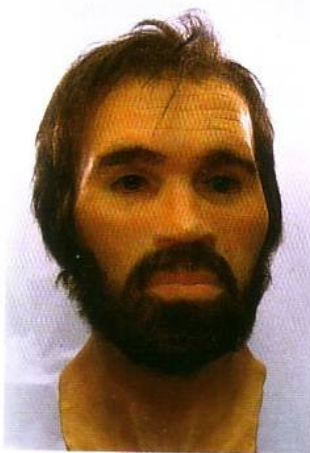
WHY WAS HE SACRIFICED?

Annie Ross, a British archaeologist, believes that Lindow Man was sacrificed to the three gods the Celts honoured, which is the reason why he was killed in three different ways.

She also believes this sacrifice was to ask the gods for protection against the Roman invasion. She even dates the sacrifice to 60AD, when the

Roman invaders tried to destroy the Celts and their religion.

Lindow Man's hands were well manicured, which shows he did not do any manual labour, and Annie thinks he was an important member of the tribe: perhaps a druid, an aristocrat, or maybe even the king, who sacrificed himself.



WHAT DID LINDOW MAN LOOK LIKE?

With modern science, forensic anthropologists can reconstruct a face in great detail. The colour of the eyes had to be imagined, but we know for sure what colour his hair was.

Lindow Man was about 28 years old and 1.68m tall, which was taller than most of his contemporaries. He was well-built and weighed about 60 kg. His beard was cut shortly before he was sacrificed, and he was in good health except for worms¹ and a little rheumatism.

1. 

If you want to discover more, visit
<http://www.thebritishmuseum.ac.uk>

http://www.britishmuseum.org/explore/young_explorers/discover/a_closer_look-1/lindow_man.aspx

http://www.britishmuseum.org/explore/highlights/article_index/l/what_did_lindow_man_look_like.aspx

<http://www.mummytombs.com/mummylocator/featured/lindowman.htm>

http://www.bbc.co.uk/manchester/content/articles/2008/04/18/180408_lindow_man_pete_feature.shtml